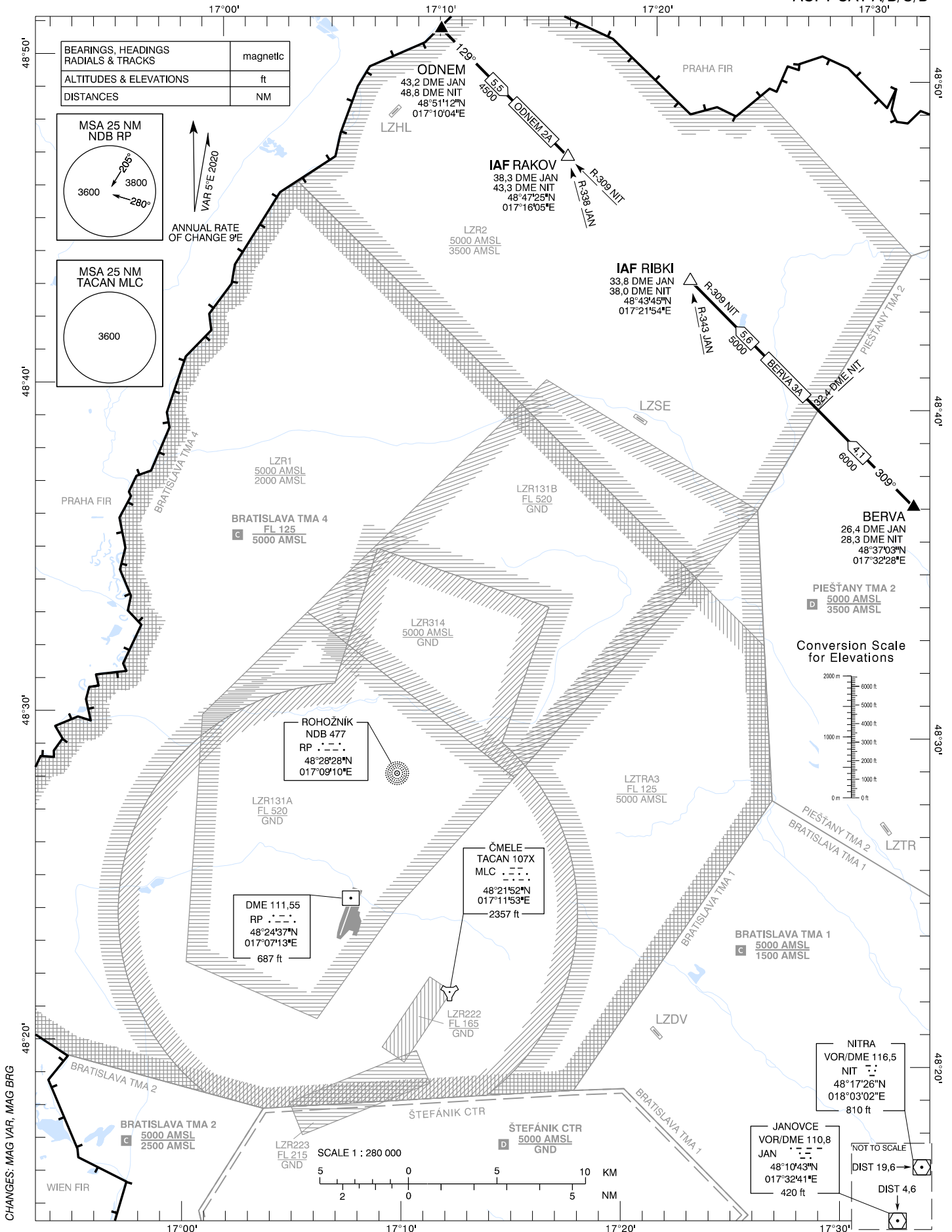


STANDARD ARRIVAL CHART -  
INSTRUMENT ( STAR ) - ICAO

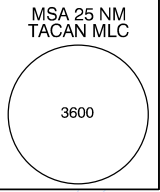
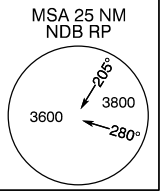
TRANSITION ALTITUDE  
10 000 ft

MALACKY RADAR 120,750 (259,625)  
MALACKY TOWER 129,575 (120,750)

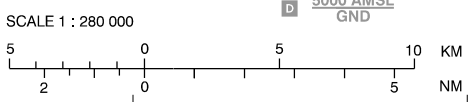
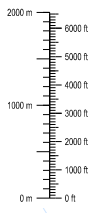
MALACKY (LZMC)  
STAR RWY 19  
ACFT CAT A/B/C/D



BEARINGS, HEADINGS RADIALS & TRACKS	magnetic
ALTITUDES & ELEVATIONS	ft
DISTANCES	NM



Conversion Scale for Elevations



CHANGES: MAG VAR, MAG BRG